

Arranging ceramic logs - Visio 90 RD & T

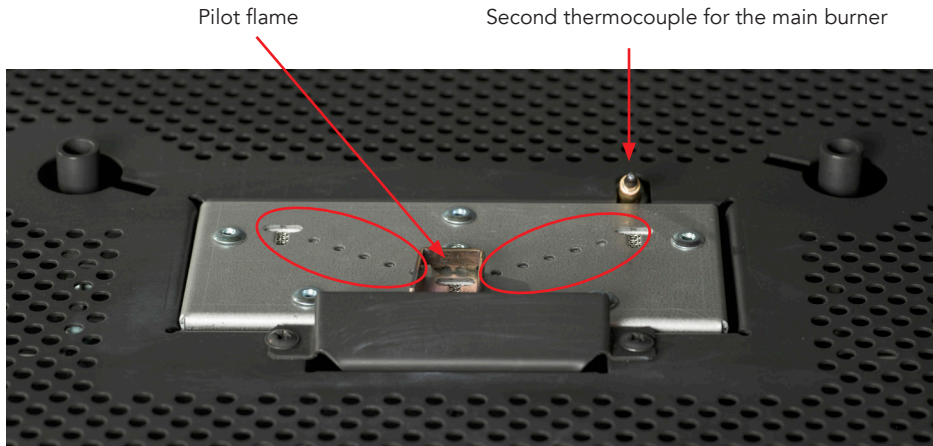


It is very important that you follow this when positioning ceramic "logs" and the embers layer in the fireplace. Failure to carry this out correctly will cause the fireplace to not burn optimally and soot to occur.



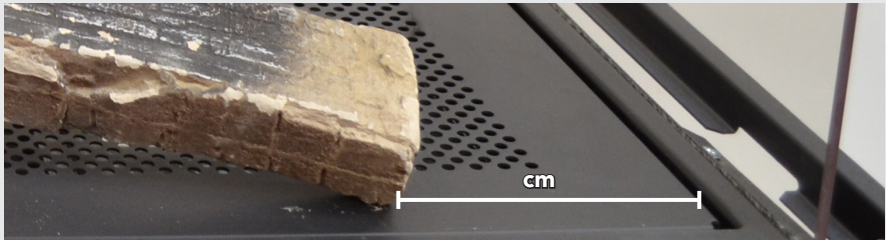
Important information: Ceramic "logs" and the embers layer

When arranging ceramic "logs" and the embers layer in the combustion chamber, it is **important that they do not cover the pilot flame and its thermocouple, and ember material must not be placed under the pilot guard**. Both thermocouples must be kept free of the embers layer. Do not cover the holes in the main burner (shown by the red circles).



NB!

The measurements on the following photos are taken **from the edge of the base plate**. See photo below.



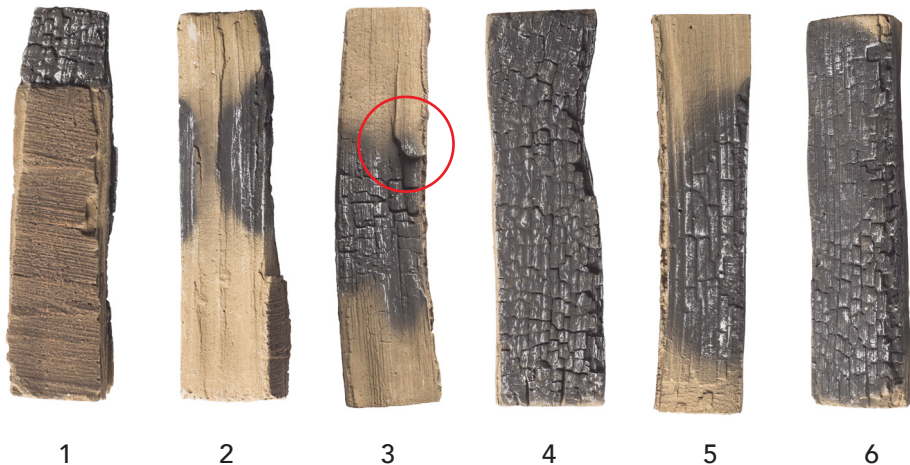
NB!

Please note that there should be a small intermediary space between the "logs" that lie on the burners and between the surrounding logs, so there is space for the flames in between them. If there is not space for the flames, the fireplace will not burn optimally and soot may form.

ARRANGING CERAMIC "LOGS" AND EMBERS

Visio 90 RD & T

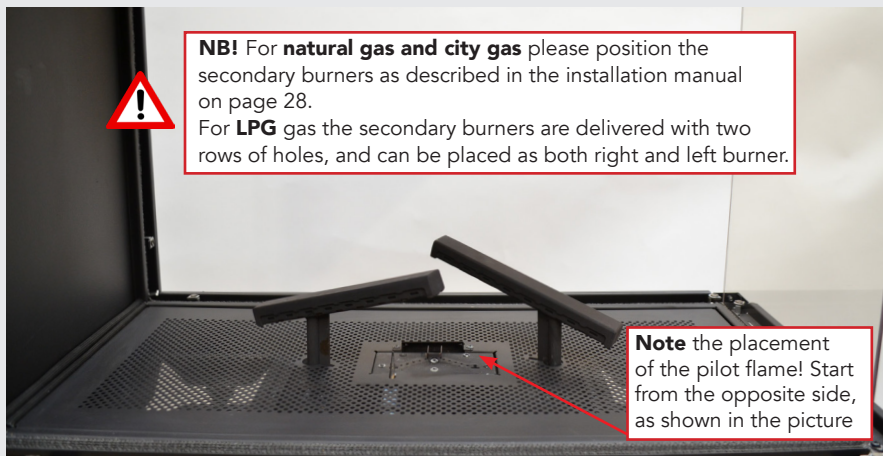
You will find these ceramic logs in the package:



Note the small bump
on the right side

Procedure:

1. Start by securing two burners in the fireplace's base plate.

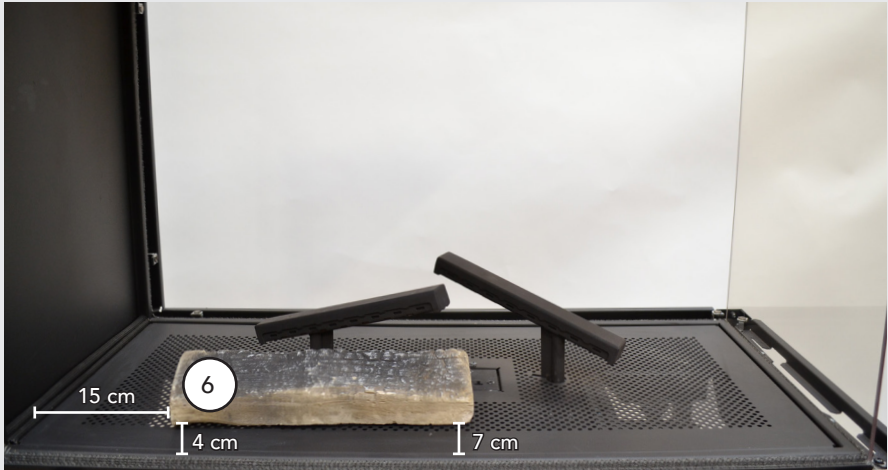


NB! For **natural gas and city gas** please position the secondary burners as described in the installation manual on page 28.
For **LPG** gas the secondary burners are delivered with two rows of holes, and can be placed as both right and left burner.

Note the placement of the pilot flame! Start from the opposite side, as shown in the picture

ARRANGING CERAMIC "LOGS" AND EMBERS

- Now start from the opposite side of the pilot flame - see photo 1 on previous page. Position log no. 6 as shown in the image.

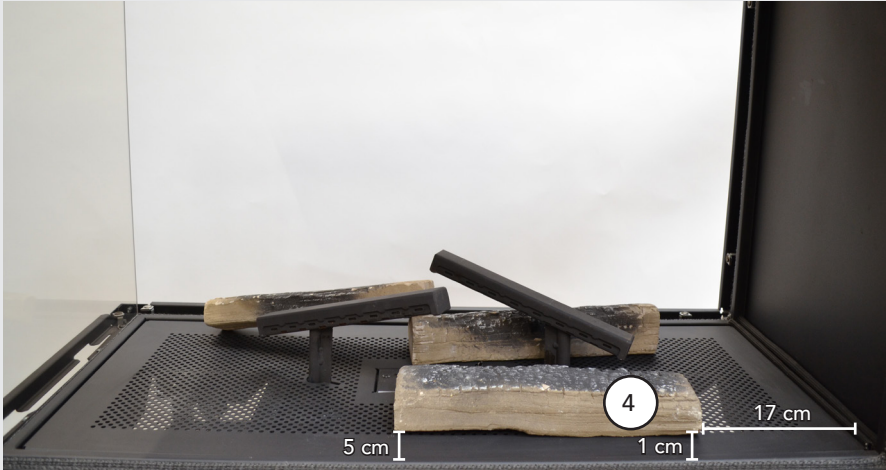


- Position log no. 5 as shown in the image. Now the remaining logs must be positioned from the opposite side - go to the same side as the pilot flame.



ARRANGING CERAMIC "LOGS" AND EMBERS

4. From the opposite side log no. 4 is positioned as shown in the image.



5. Then position log no. 3 resting on log no. 4 as shown in the image.



ARRANGING CERAMIC "LOGS" AND EMBERS

- Now the glass stones should be spread out in the gas fireplace. Measure out 8 dl of glass stones in a measuring cup.



- Spread out the glass stones (8 dl in total) on each side of the gas fireplace - over the LED lights. It is important that the glass stones are spread out in a thin layer that covers the holes in the bottom of the fireplace.



ARRANGING CERAMIC "LOGS" AND EMBERS

8. Now measure out 2,5 l of embers (a mix of the grey and black chips).



9. Spread the embers across both the glass stones and the base plate with the holes. Place the filaments on the pilot area.



NB! It is extremely important that you do not cover the pilot area and the holes there (see page 2).

ARRANGING CERAMIC "LOGS" AND EMBERS

10. Position log no. 1 (with the recess) over the right burner.



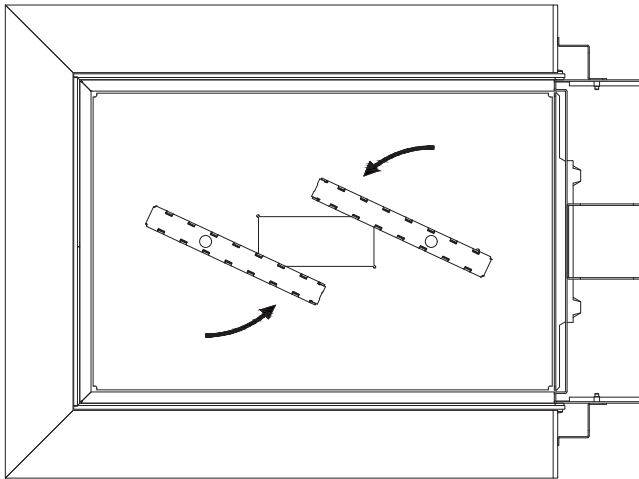
11. Position log no. 2 (with the recess) over the left burner.



ARRANGING CERAMIC "LOGS" AND EMBERS

12. Ensure that log no. 3 and log no. 6 do not touch log no. 1 and log no. 2. There should be space between them.

13. After positioning the last logs in the fireplace, it is important that the secondary burners are adjusted towards each other. See drawing below (the fireplace is seen from the top).



14. Mount the glasses again.
Scan the QR code to see a video of how to mount the glass.

